



Museum of
Natural
History

What's On

at the Museum of Natural History

January - April 2017



UNIVERSITY OF
OXFORD

EXHIBITIONS



Brain Diaries

10 March - 3 September
Upper East Gallery



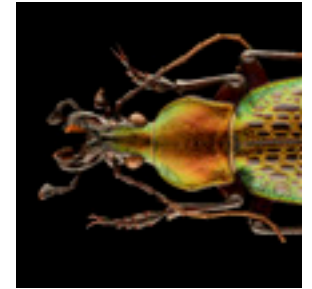
An exhibition and series of events revealing how the latest neuroscience is transforming what we know about the lifelong development of our brains, from birth to the end of life. A partnership with Oxford Neuroscience.

bit.ly/exhibitions-mnh

Microsculpture

Until 29 January
Main Court

Last chance to see insect specimens from the Museum's collections like never before in the large scale, high magnification photographic portraiture of Levon Biss.



The Song of the Trees

Opening 24 February
Wytham Room

A small display telling the story of some of the trees in the University of Oxford's Wytham Woods.



Oxford Photographic Society

Until 22 January
Café Gallery

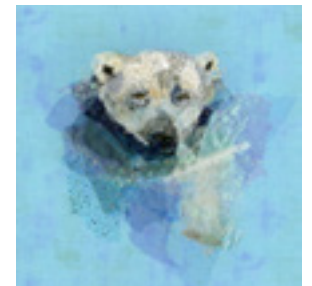
The Museum is hosting the Oxford Photographic Society's annual exhibition, this year themed on the beauty of the natural world.



Artweeks Arctic

Until 29 January
Upper East Gallery

Arctic-inspired glasswork, paintings, photography, textiles and ceramics from a range of Oxfordshire Artweeks artists.



Admission to all exhibitions is free

PRESENTING...

A themed changing display

Pioneers of Photography

Until 24 January

Early photographers Charles Dodgson, Julia Margaret Cameron and Sarah Angelina Acland and their connection to the Museum.

Flight of the Dodo

25 January - 22 March

Tracing the distribution of casts and models of the Oxford Dodo head around the world.

Charles Lyell

23 March - 21 May

Discover how this former lawyer helped to change geology forever.



REGULAR EVENTS

FOR ADULTS

Spotlight Specimens

Monday-Thursday at 2.30pm

All ages

An informal specimen show-and-tell in the Museum court. Ask questions and chat with Museum experts.

Café Scientifique

Second Tuesday each month, 7.30-9pm

Adults

Hear scientists discuss research over a glass of wine. **Details:** www.bit.ly/cafescioxford

Architecture Tours

Every Friday, 2.30pm & 3.15pm, Adults

Take a free volunteer-led tour to learn about the Museum's Grade 1-listed Neo-Gothic building.

FAMILY FRIENDLY

Science Saturdays

Every Saturday, 21 Jan - 4 Mar

2-4pm, Drop-in, Ages 8+

Meet scientists to investigate real natural history specimens from the collection.

Family Friendly Sundays

Every Sunday, 2-4pm, Drop-in

Family Friendly trails, crafts, backpacks and more, all provided by Museum volunteers.

Eggstraordinary Easter Eggventure

Saturday 8 April - Sunday 23 April

Drop-in, during opening hours

Eggsplare the Museums with an eggciting egg-hunters trail!

What's on

CALENDAR

■ Adults and young people

■ Families

■ Older people

Mon 9 Jan, 7-8.30pm

Ecology and Behaviour of American Mink in the UK

Conservation biologist Dr Joanna Bagniewska explores the ecology of the invasive American Mink in Britain today.

www.oxonmammals.org

Thu 12 Jan, 11am-12pm

Sensing Culture: Tour for Blind and Partially-Sighted Visitors

A hands-on tour of the Museum to highlight the insect collection, specially created for visitors with impaired sight. Part of our Heritage Lottery-funded 'Sensing Culture' partner project with the RNIB.

Booking essential, email:
outreach@museums.ox.ac.uk

Sun 15 Jan, 10am-2pm

Insect Collections Day

Need to check your insect identifications? Visit the Museum's British entomology reference collection materials, with staff on hand to help. **Book at:**
www.bit.ly/mnhevents

Mon 16 Jan, 10.30am & 11.30am, Under 5s

A Little Look at... Bugs

An active, hands-on exploration telling the tales of animals in the Museum.

Tue 17 Jan, 2.30-4pm

Age of Nature

A group enabling older people to explore and enjoy the Museum collections. Dementia Friendly. No booking required.

Tue 24 Jan, 10.30am-12.30pm

Under 5s, Drop-in

Curious Cubs

Pick up one of our activity bags and explore with Pebbles, Smokey and Huxley.

Sat 28 Jan, 2-4pm, Drop-in

Year of the Rooster

Celebrate all things chicken! Craft activities, trails and talks to discover how the world's most successful 'dinosaur' has shaped our world.

Mon 6 Feb, 10.30am & 11.30am, Under 5s

A Little Look at... Birds

An active, hands-on exploration telling the tales of animals in the Museum.

Sat 11 Feb, 3pm and 4pm

Out in Oxford

A curator- and volunteer-led tour of the specimens that are featured in the new *Out in Oxford* LGBTQ+ trail.

Book at: www.bit.ly/mnhevents

Sat 11 Feb, 10.30am-4pm

Coleopterists' Day

Morning of beetle talks, with afternoon workshop. A chance to visit the collections and library by arrangement. **Email:**
life@oum.ox.ac.uk

Mon 13 - Wed 15 Feb, 1-4pm, Drop-in

Half Term: Spring Chickens

Find out all there is to know about chickens at this chicken bonanza! Crafts, trails and activities.

What's on

Mon 13 Feb, 7-8.30pm

Life of the Mole

Roger Trout explores the ecology of this little-known subterranean mammal.

www.oxonmammals.org

Tue 21 Feb, 10.30am-12.30pm

Under 5s, Drop-in

Curious Cubs

Pick up one of our activity bags and explore with Pebbles, Smokey and Huxley.

Tue 28 Feb, 2.30-4pm

Age of Nature

A group enabling older people to explore and enjoy the Museum collections.

Dementia Friendly. No booking required.

Mon 6 Mar, 10.30am & 11.30am, Under 5s

A Little Look at... Tall & Small

An active, hands-on exploration telling the tales of animals in the Museum.

Fri 10 Mar, 2.30-3.30pm, Drop-in

Oxford International Women's Festival - Brain Spotlight

Meet female neuroscientists and find out about your brain in this exhibition spotlight. In partnership with Oxford Neuroscience.

Sat 11 Mar, 12-4pm, Drop-in

Super Science Saturday: The Brain

What's going on inside your head? Meet top brain scientists and take part in demos and activities to find out.

Mon 13 Mar, 7-8.30pm

Deer: A Conservationist's Friend or Foe

Nigel Fisher, Conservator of Wytham Woods, reveals the results of twenty years of practical deer management and research.

www.oxonmammals.org

Wed 15 Mar, 6.30-7.30pm

The Shaking Palsy: Past, Present and Future of Parkinson's Disease

Professor Paul Bolam reflects on the history of this disease, its treatment and potential future therapies. In partnership with Oxford Neuroscience. **Book at:**

www.bit.ly/mnhevents

Fri 17 Mar, 9.30am-3.30pm

Plus adult evening event 6-9pm

Gene and Cell Technology Day

Discuss and debate cutting-edge research with scientists, patients, research students and clinicians. A chance to think about the impact that research has on society and on you. Co-hosted with British Society for Gene and Cell Technology. **Book at:**

www.bsgct.org

Sat 18 Mar, 10am-4.30pm

Whale, Dolphin and Seabird ID

Join MARINELife for training on observing and identifying whales, dolphins and seabirds and recording data for scientific research. Qualify as a ship-based MARINELife volunteer surveyor.

£65. To book email:

bookings@marine-life.org.uk

Sat 18 Mar, 2-4pm, Drop-in

Brain Diary Demos

Meet the scientists behind the Brain Diaries exhibition and take part in fun hands-on activities. In partnership with Oxford Neuroscience.

Tue 21 Mar, 2.30-4pm

Age of Nature

A group enabling older people to explore and enjoy the Museum collections. Dementia Friendly. No booking required.

Tue 21 Mar, 10.30am-12.30pm

Under 5s, Drop-in

Curious Cubs

Pick up one of our activity bags and explore with Pebbles, Smokey and Huxley.

Thu 23 Mar, 10am-3pm

Brain Diaries Psychology Day

A day of talks and activities aimed at A level Psychology students but open to all. In partnership with Oxford Neuroscience.

To book email: education@oum.ox.ac.uk

Fri 24 Mar, 6.30-7.30pm

The No Bell Prize

A fun and informative panel event where neuroscientists get interrupted by a bell if they use incomprehensible jargon! In partnership with Oxford Neuroscience.

Book at: www.bit.ly/mnhevents

Sat 25 Mar, 10am-5pm

British Entomological and Natural History Society AGM

Talks, tours and discussions and address from the president of BENHS. **For info see: www.benhs.org.uk**

Sat 25 Mar, 2-4pm, Drop-in

Brain Diary Demos

Meet the scientists behind the Brain Diaries exhibition and take part in fun hands-on activities. In partnership with Oxford Neuroscience.

Wed 29 Mar, 6.30-8pm

Fixing the Brain Before it's Broken

Professor Clare Mackay explains how imaging techniques can help develop more effective treatments for brain disease. In partnership with Oxford Neuroscience.

Book at: www.bit.ly/mnhevents

Mon 17 - Wed 19 Apr, 1-4pm, Drop-in

Easter Holidays: Brain Power!

Discover the brilliant things your brain does, from your head to your toes!

Tue 25 Apr, 2.30-4pm

Age of Nature

A group enabling older people to explore and enjoy the Museum collections. Dementia Friendly. No booking required.

■ Adults and young people

■ Families

■ Older people

■ Suitable for all

All events are free unless stated otherwise, but donations help support our programme.

For the full Family Friendly programme across the Oxford University Museums see **www.museums.ox.ac.uk**

Opening hours

Open daily from 10am-5pm

Admission is free

Group and school visits

Schools and organised groups please pre-book on 01865 282 451 or email education@oum.ox.ac.uk

Museum Café

Enjoy snacks and drinks throughout the day, courtesy of Oxford's Mortons.

Shop

The Museum Shop offers a wide range of products including fossils, minerals, publications, toys, jewellery, postcards and Museum products: shop@oum.ox.ac.uk

Library and Archives

Our Library and Archives are open to anyone. For appointments email library@oum.ox.ac.uk

Learning at the Museum

The Museum offers taught sessions for primary and secondary Key Stages, regular Family Friendly activities, and a programme of adult events.
www.oum.ox.ac.uk/educate

Volunteering

To find out about volunteering at the Museum see:
www.museums.ox.ac.uk/volunteers

Community Outreach

For information on free workshops for adult community groups see:
www.museums.ox.ac.uk

Access

The Museum provides wheelchair access to all floors and free disabled parking. There is no other public parking available on site.

Hire the Museum

The Museum and its 300-seat Lecture Theatre are available for private hire functions, including weddings, dinners and conferences: venue@oum.ox.ac.uk

Location

The Museum is about 10 minutes' walk north of Oxford city centre and about 15 minutes' walk from Oxford rail station.



Supported using public funding by
ARTS COUNCIL ENGLAND



Museum of
**Natural
History**

Oxford University Museum of Natural History
Parks Road
Oxford
OX1 3PW
01865 272950
info@oum.ox.ac.uk
www.oum.ox.ac.uk



@morethanadodo
morethanadodo.com